



CITY OF  
**PALO ALTO**

# RECREATION WELLNESS CENTER UPDATE

**JANUARY 17, 2024**

[www.cityofpaloalto.org](http://www.cityofpaloalto.org)



# WHY DOES PALO ALTO NEED A GYM?

---

- There are no City-owned gyms in Palo Alto
- The need for gym space is increasing
  - Youth sports – boys, girls, co-ed
  - Adults and seniors
  - Therapeutic recreation
- Programs are limited due to lack of indoor space
- Neighboring cities have gym space
  - Menlo Park
  - Mountain View
  - Redwood City
  - Sunnyvale



## TOPICS OF REVIEW

---

- Project/Partnership Goals
- Steps to achieving the goals
- Location selection process and approval
- Project next steps
- Open discussion

# FRIENDS of the PALO ALTO RECREATION & WELLNESS CENTER

---



- Date of creation
- Articles of incorporation
- Determination from IRS & Board
- Website [www.parwc.org](http://www.parwc.org)
- Use Friends of the JMZ as a model

*Achieving recreation and wellness through the strength and spirit of community*

# FRIENDS of the PALO ALTO RECREATION & WELLNESS CENTER

---

- Bern Beecham
- Yudy Deng
- Tom Dubois
- Steve Emslie
- Nellis Freeman
- Marc Guillett
- Judy Kleinberg
- Jeff LaMere
- Roger Smith
- Tim Stitt
- Anne Warner Cribbs, OLY





## TOPICS OF REVIEW

---

- Project/Partnership Goals
- Steps to achieving the goals
- Location selection process and approval
- Project next steps
- Q&A



# Project/Partnership Goals

---

- Achieve a Parks Master Plan Priority Project by constructing a new City gymnasium in Palo Alto (Parks Master Plan Adopted 2017)
- Partner with Friends Group for Funding and Community Support
- Fulfill the community need and demand for more indoor activity space



## TOPICS OF REVIEW

---

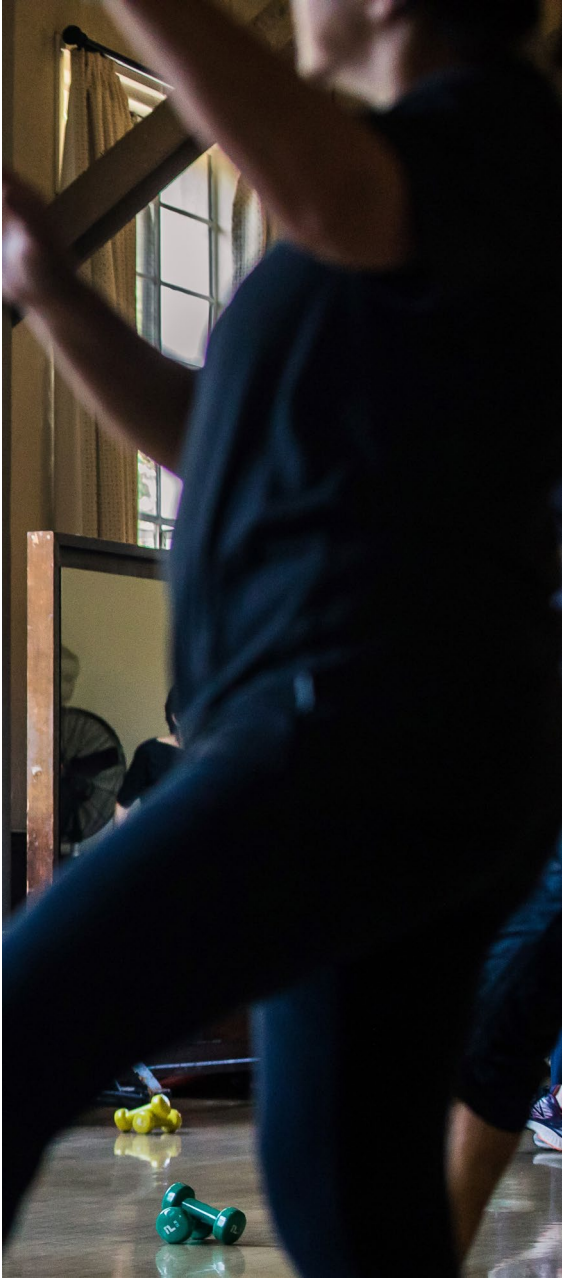
- Project/Partnership Goals
- Steps to achieving the goals
- Location selection process and approval
- Project next steps
- Q&A



# Steps to Achieving the Goals

---

- ✓ Agreement Between Friends and City to Explore Construction of a New Recreation Wellness Center/Gymnasium
- ✓ Create a Wellness Center Friends Group for Fund Raising and Outreach Purposes
- ➔  **Select A Location** – Community Outreach Process (City Managed with Friends)
- Letter of Intent (Draft) Between Friends and City (Fund Raising and Future Partnership/Operation)
- Develop Fund Raising Material and Images (Friends)
- Fundraising (Friends)
- Finalize Building Design & Community Outreach Process (Friends)
- City Planning Review Process (City Managed with Friends)
- Construction Plan Completion (Friends)
- Construction (Friends Managed with City Review)



## TOPICS OF REVIEW

---

- Project/Partnership Goals
- Steps to achieving the goals
- Location selection process and approval
- Project next steps
- Q&A

# Location Selection Process and Approval

---

- ✓ Initial site review
- Friends review and discussion – In Progress
- ➔  Community outreach (City Managed with Friends)
  - On site meeting
  - On-line meeting
- Parks and Recreation Commission discussion
  - Ad Hoc Group – In Progress
  - Full Commission (City Managed with Friends)
- Council approves location
- Council approves Letter of Intent with Friends

# Location Selection Process – Initial Site Review

---

## Selection Criteria – Main Considerations

- Locate new facility in one of Palo Alto's Regional Parks (Greer, Mitchell and Rinconada)
  - Larger size parks for regional use
  - Larger group and parking capacity
  - Located on larger arterial streets
  - Construction of Recreation Wellness Center in keeping with regional park uses
- Limit impact of existing park facilities, especially playing fields
- Locate on city-owned land
- Provides opportunity to expand parking and access
- Similar uses to existing park uses

## Location Selection Process – Initial Site Review

---

Per the criteria **Greer Park** is the preferred site location:

- ✓ Locate new facility in one of Palo Alto's Regional Parks (Greer, Mitchell and Rinconada)
- ✓ Limit impact of existing park facilities, especially playing fields
- ✓ Locate on city-owned land
- ✓ Provides opportunity to expand parking and access
- ✓ Similar uses to existing park uses

# Location Selection Process – Initial Site Review

## Greer Park Site Review

- Four locations reviewed
- Criteria
  - No impact to sports fields
  - Close location to parking/access
  - Integrated in the overall layout of the park
  - Existing utilities at location
  - Address needed park upgrades/repairs
  - Utilizes open park space



# Location Selection Process – Initial Site Review

## Greer Park Site Review

- Four locations reviewed
- Site A
  - No Impact to Sport Fields
  - Close Location to Parking/Access
  - Integrated in the Overall Layout of the Park
  - Existing Utilities at Location
  - Address Needed Park Upgrades and Repairs
  - Utilizes Open Park Space
- Site B
  - No Impact to Sport Fields
  - Close Location to Parking/Access
  - Integrated in the Overall Layout of the Park
  - Existing Utilities at Location
  - Address Needed Park Upgrades and Repairs
  - Utilizes Open Park Space



Greer Park Aerial Image



# Location Selection Process – Initial Site Review

## Greer Park Site Review

- Four locations reviewed
- Site C
  - ✓ No Impact to Sport Fields
  - ✓ Close Location to Parking/Access
  - ✓ Integrated in the Overall Layout of the Park
  - ✓ Existing Utilities at Location
  - ✓ Address Needed Park Upgrades and Repairs
  - ✓ Utilizes Open Park Space
- Site D
  - ✓ No Impact to Sport Fields
  - Close Location to Parking/Access
  - ✓ Integrated in the Overall Layout of the Park
  - Existing Utilities at Location
  - Address Needed Park Upgrades and Repairs
  - Utilizes Open Park Space



Greer Park Aerial Image



Site Location Exhibit



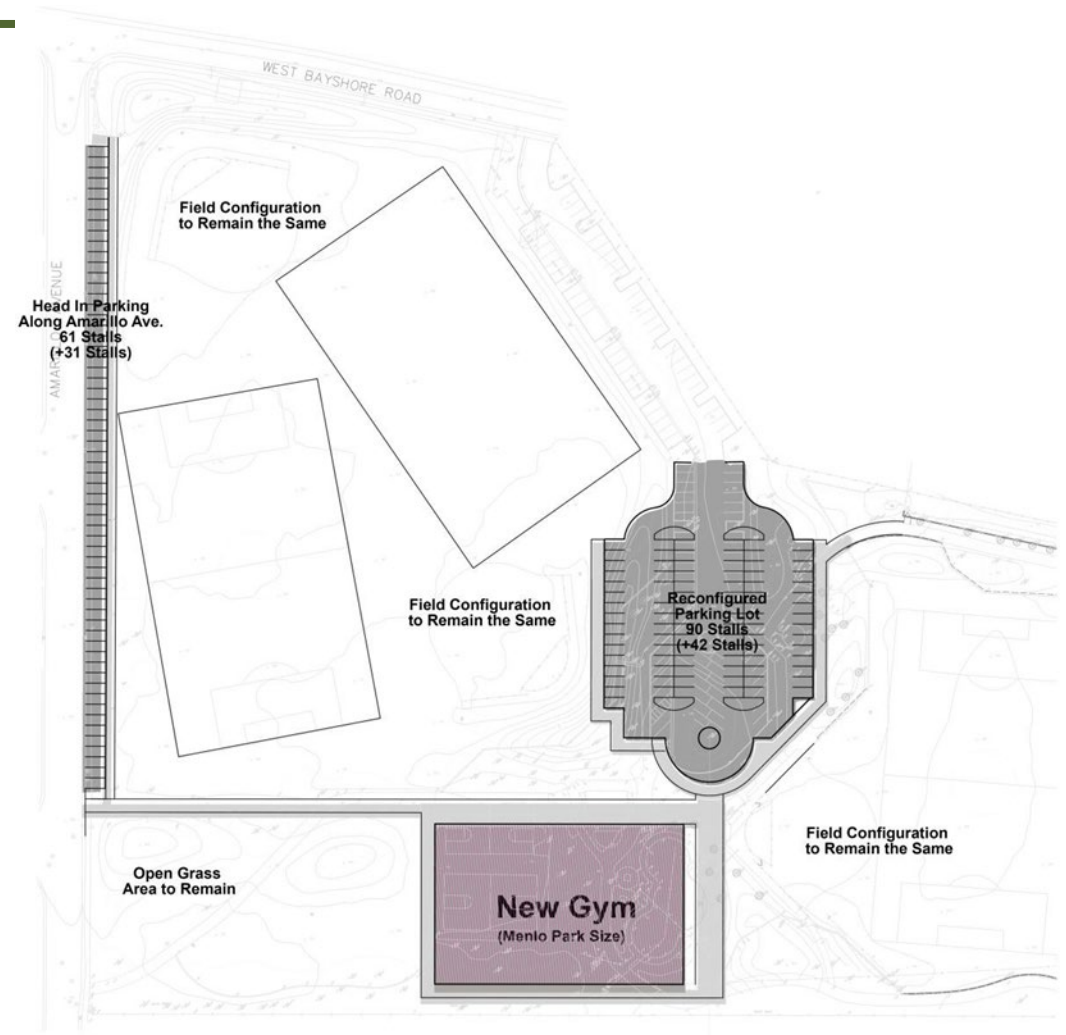
# Location Selection Process – Initial Site Review

## Recommendation – Site C

- ✓ No Impact to Sport Fields
- ✓ Close Location to Parking/Access
- ✓ Integrated in the Overall Layout of the Park
- ✓ Existing Utilities at Location
- ✓ Address Needed Park Upgrades and Repairs
- ✓ Utilizes Open Park Space

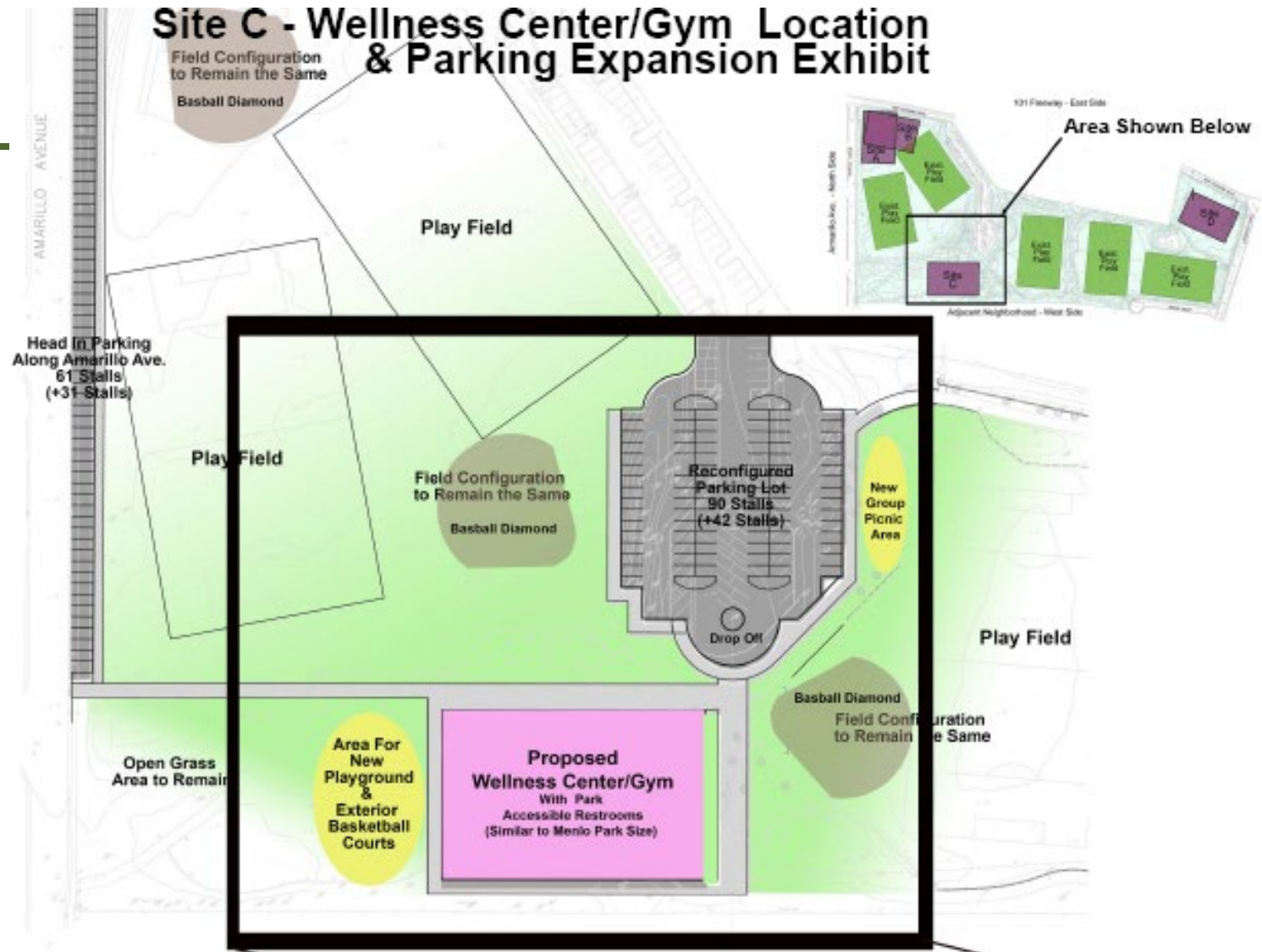
## Also...

- Maintains all existing play fields
- Adjacent to main parking lot
- Open area to increase parking lot (42 stall increase)
- Converts Amarillo Ave. to head in parking (31 stall increase)
- May buffer adjacent neighborhood from park and freeway noise
- Address needed park upgrades and repairs
  - Add new inclusive playground
  - Parking lot renovations – Existing lot needs repaving and striping
  - Planting/Irrigation Renovations – Convert to native/drought tolerant plants and plant more trees
  - New group picnic area



# Location Selection Process Initial Site Review

Site C with  
expanded parking  
lot and parking on  
Amarillo Ave.



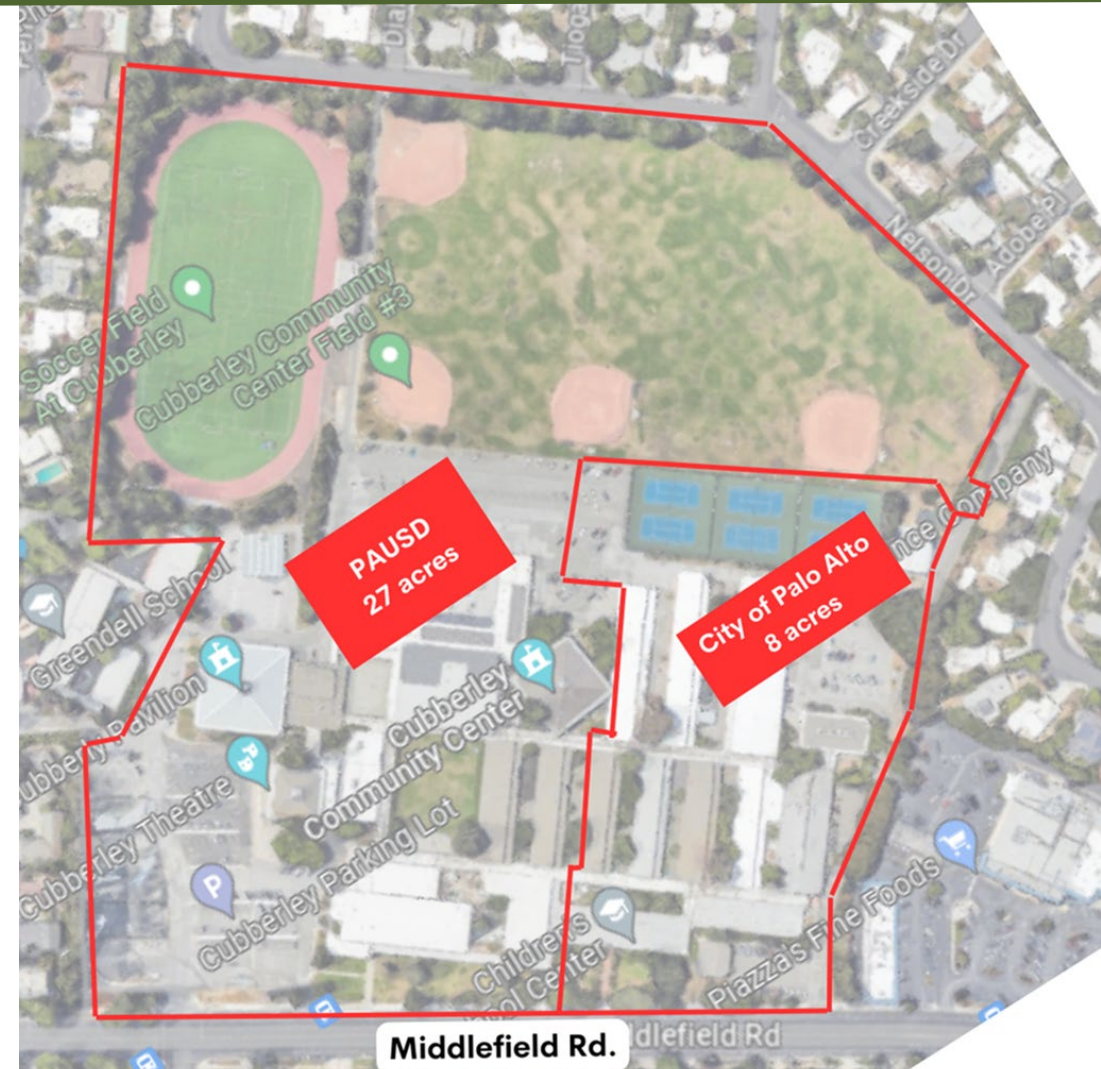
# CUBBERLEY COMMUNITY CENTER

## Ownership

- City 8 acres
- PAUSD 27 acres

## City leases

- Fields
- Gyms
- Pavilion
- Theatre



# CURRENT STATUS

PAUSD Board invited the City Council to submit one or more proposals to acquire more land at Cubberley.

## Opportunities

- Wellness Center could be first phase in Cubberley redevelopment
- Inspires progress
- No loss of park space
- Similar uses as existing spaces
- Incorporate space for parking



# CURRENT USES at CUBBERLEY

---

## HEALTH AND WELLNESS

AbilityPath Stroke Rehabilitation  
Art of Living  
Avenidas  
Cardiac Therapy  
Dance Connection  
Dance Magic  
Dance Visions  
Grudu Shradha  
MakeX  
Palo Alto Soccer Club  
Project Safety Net  
Ranger Taekwondo  
Silicon Valley Karate  
Soo Bahk  
Taijiquan Tutelage  
Zohar Dance Co.

## EDUCATION

Acme Education Center  
BrainVyne  
Children's Preschool Center  
Czech School of California  
Euler Circle Mathematics  
Hua Kuang Chinese Reading Room  
Living Wisdom  
Mustard Seed

## VISUAL AND PERFORMING ARTS

Artists' Studios  
California Pops Orchestra  
Melody Music  
Palo Alto Chamber Orchestra

## RENTABLE ROOMS

Classrooms  
Gyms A and B  
Pavilion  
Theater

## SPORTS

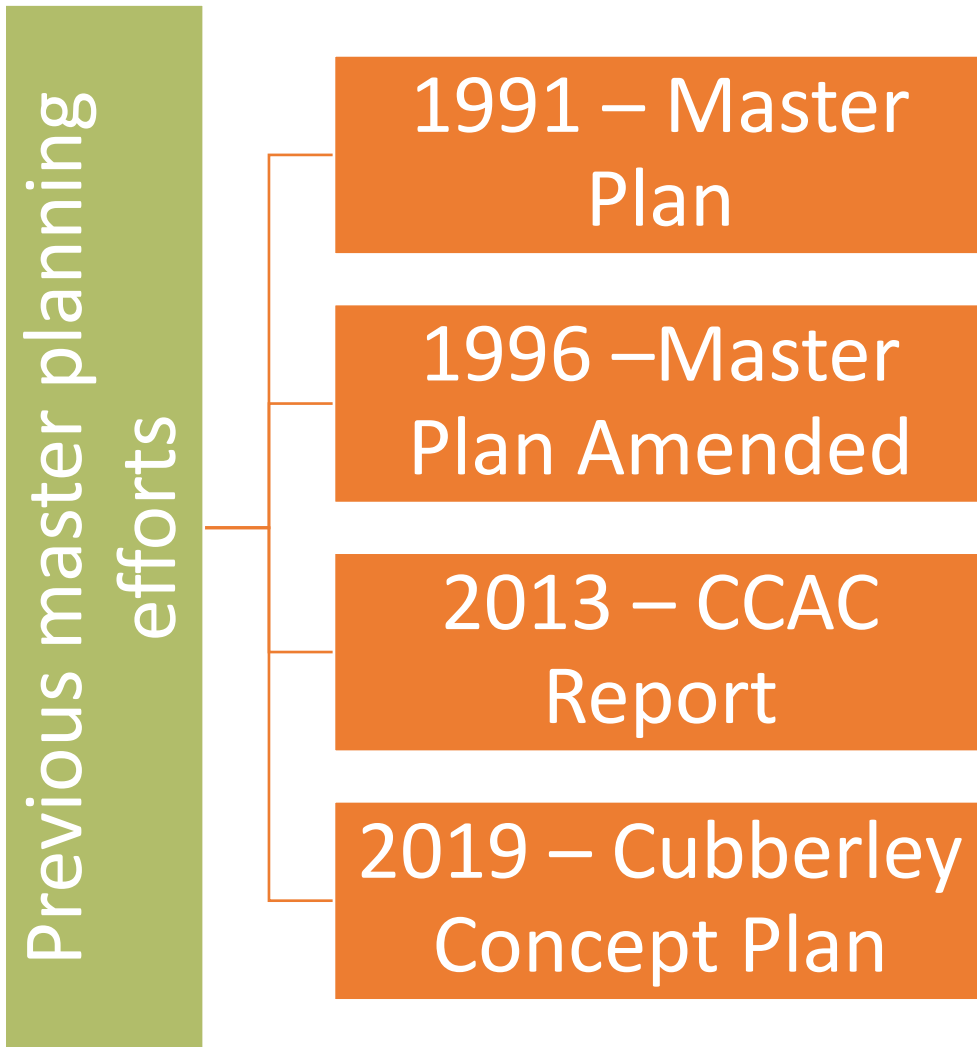
Academy of Volleyball  
American Youth Soccer Organization  
League tournaments  
Palo Alto Adult Soccer Club  
Palo Alto Girls Softball  
Palo Alto Soccer Club  
Palo Alto Tennis Club  
Silicon Valley Adult Sports  
Stanford Soccer Club

## OTHER SERVICES

City of PA Office of Emergency Services  
Friends of the Palo Alto Library  
Minority Television Project (KMTP-TV)  
Palo Alto Historical Association  
Palo Alto Humane Society  
Palo Alto Puppy Training  
SIRIUS Dog Training

*Note: Colors used are only for ease of viewing*

# MASTER PLANNING



**CUBBERLEY**  
COMMUNITY CENTER



CUBBERLEY  
CO-DESIGN



## TOPICS OF REVIEW

---

- Project/Partnership Goals
- Steps to achieving the goals
- Location selection process and approval
- **Project next steps**
- Q&A

## Project Next Steps

---

Site selection community outreach process (4-6 months / City)

- Community outreach meeting
- Ad Hoc Park Commission Review
- Parks and Recreation Commission Recommendation
- Follow the example of the JMZ

Approval of Site Location by Council and Letter of Intent (2-3 months / City)

Develop fund raising material/campaign (3-4 months / Friends)

Fund raise (1-3 years / Friends)

Future schedule to be established based on funds raised





CITY OF  
**PALO  
ALTO**

**Kristen O’Kane**

**Community Services Director**

*Kristen.o’kane@cityofpaloalto.org*

*650-463-4908*

**Friends of the Palo Alto**

**Recreation & Wellness Center**

*info@parwc.org*